



# WALKArlington Walkabouts: Fairlington-Shirlington

## Length:

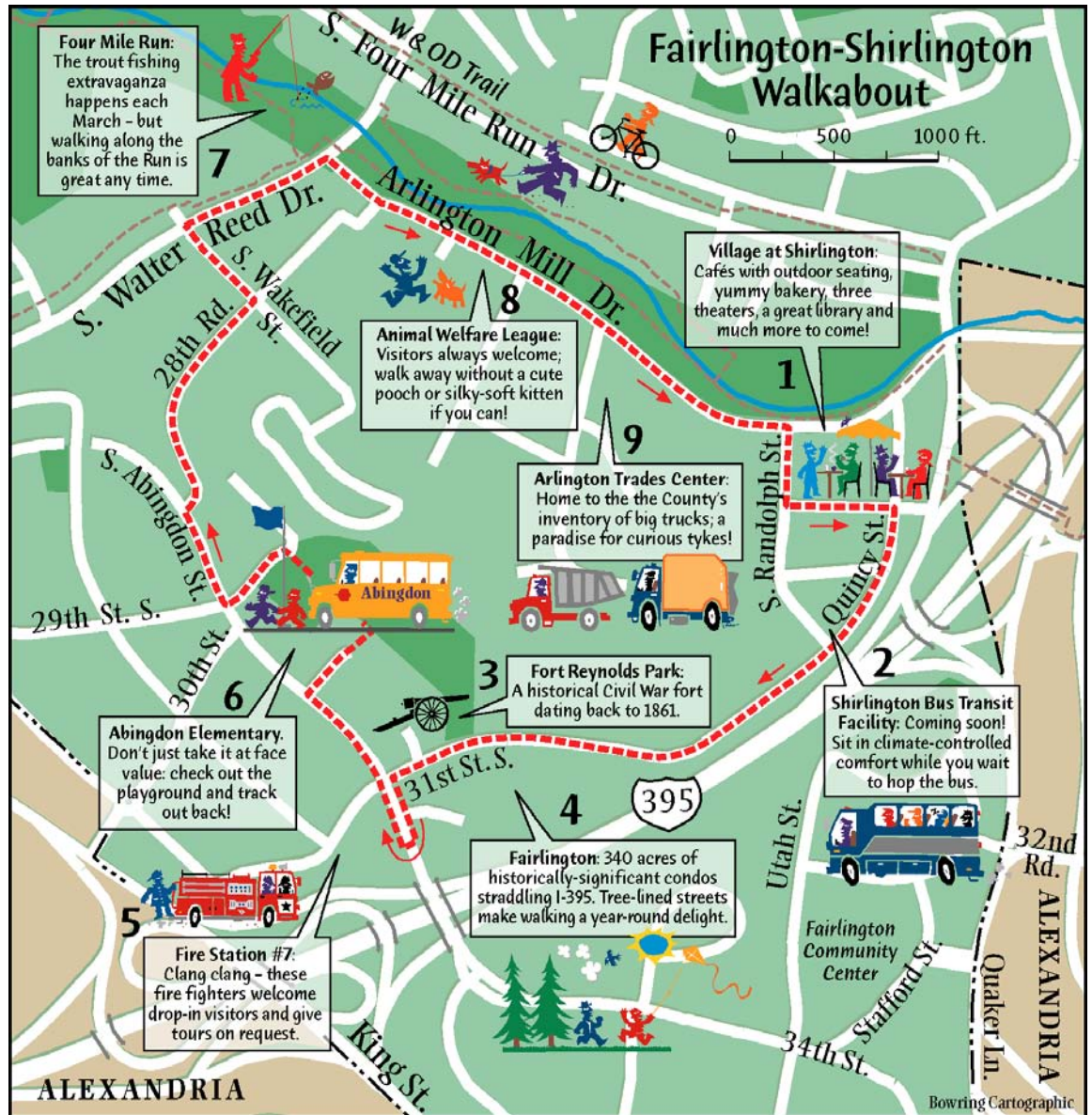
Two miles

## Terrain:

Gently rolling except for a few short, steep passages.

## Ambience:

Urban village café and cultural center; tree-lined residential streets.



The completion of the Pentagon in 1943 marked the beginning of boom times for Fairlington/Shirlington by creating a tremendous need for housing. Shirley Highway (now part of I-395), carrying traffic to and from the Pentagon, was completed in 1944, and only added to the area's desirability and gave rise to the Shirlington Shopping Center.

After a boom-bust cycle that lasted 50 years, the center is currently enjoying a renaissance thanks to an innovative public-private partnership between developer FRIT and Arlington County. And sixty years after the first unit opened its doors, Fairlington remains a highly sought-after multi-family residential community.

For more details, visit [www.walkarlington.com](http://www.walkarlington.com)

## Other nearby walkabouts:

Fairlington Kid and Dog Walk; Shirlington Walkabout; Walk through Nauck ([www.walkarlington.com/go/walks.html](http://www.walkarlington.com/go/walks.html))

